

ZAXIS-6 series

HITACHI

Reliable solutions

ZAXIS350



HYDRAULIC EXCAVATOR

Model code : ZX350LC-6 / ZX350LCN-6

Maximum engine power : 210kW (ISO14396)

Operating weight : 34 200 – 36 300 kg

Bucket ISO heaped : 1.15 – 1.86 m³

ZX350LC-6. NO COMPROMISE

The ZX350LC-6 incorporates unique Hitachi technology that has been specially developed for the Zaxis-6 medium excavator range. This innovative model has been created with the highest level of performance, but without compromising on the increasing demand for operational efficiency.

The result is the ultimate excavation machine, reinforcing Hitachi's reputation for the quality of its engineering and the durability of its products. The ZX350LC-6 is the epitome of reliability, with incredibly versatile features that highlight its suitability for a wide range of industry solutions.



6. THE ULTIMATE IN RELIABILITY



8. INDISPUTABLE DURABILITY



10. A VERSATILE PLAYER



12. THE QUEST FOR QUALITY



14. MASTERS OF TECHNOLOGY

DEMAND PERFECTION

The Hitachi ZX350LC-6 has been developed using cutting-edge technology at the world's largest excavator factory in Japan. Perfectly suited to the demands of the European construction industry, it has been built to deliver exceptional levels of productivity at the lowest possible cost of ownership.



High quality

The finest design elements and materials.



Outstanding versatility

Tilt and rotary tilt modes complete the attachment support system.



Lifetime reliability

Reliable components reduce the likelihood of oil leaks.



Ultimate durability

Larger track guards reduce damage to track link.





Maximised performance

Remote monitoring with Global e-Service online application.



Safe environment

Handrails and a reinforced platform enhance safety.



Fewer emissions

SCR system reduces NOx from exhaust gas.



Reduced fuel consumption

15% fuel saving in ECO mode (7% in PWR mode)



Easy access

Wide-opening engine cover for maintenance.



Engine protection

High-performance and large-capacity fuel circuit.



Exceptional efficiency

TRIAS II system reduces total hydraulic loss.



“ *Hitachi is technically better and more reliable than many of its competitors* ”

Hartmut Pieper, Managing Director,
H Ehlert & Söhne (GmbH & Co.) KG

THE ULTIMATE IN RELIABILITY

Like all Hitachi Zaxis-6 medium excavators, the ZX350LC-6 can operate efficiently on a variety of challenging job sites, delivering optimum levels of availability and performance. It can be relied upon to deliver a profitable return on investment.

User-friendly fuel filters

The main fuel filter screws into place on the ZX350LC-6. This prevents dust from entering the fuel circuit during routine maintenance. It is also easy to replace.

Easy-to-open engine cover

The engine compartment and other components are easily accessible for routine maintenance thanks to the engine cover, which can be opened up fully from the platform.

Reduced risk of overheating

The expansion tank is now mounted on top of the engine's cooling system so that the

air can be completely removed. This prevents the engine parts from overheating.

Oil leak prevention

The risk of oil leaks is reduced by a rubber hose fitted with a flange, which has been incorporated into the design of the hydraulic return pipes. These enhance the reliability of the system.

Seal and roller protection

Mud falls out easily from the reconfigured lower roller, which prevents clogging on the inside and any subsequent damage to the oil seals.



Easy access to the engine compartment.



The main fuel filter is easier to replace.



The expansion tank prevents engine parts from overheating.



Risk of damage is reduced by a reinforced motor cover.



The disconnect switch has improved safety during maintenance.

i The Zaxis-6 prototype was tested extensively in six countries: The Netherlands, Belgium, Germany, Norway, Sweden and Italy. Positive comments confirmed that the new range achieved a low level of fuel consumption



INDISPUTABLE DURABILITY

With a market-leading reputation for the most reliable and durable construction machinery, Hitachi draws from more than four decades' experience of manufacturing mechanical and hydraulic excavators. The Zaxis-6 range of medium excavators is the most recent incarnation of this expertise and has been developed to withstand the most demanding working environments.

Durable motor cover

The thickness of the travel motor cover has increased from 4.5mm (on the previous model) to 8mm on the ZX350LC-6. The position of the bolts has also been optimised to reduce potential damage.

helps to avoid electrical accidents during maintenance.

Reinforced tracks

Enlarged track guards are fitted to the ZX350LC-6, which help to prevent potential damage being caused to the track link and enhances the excavator's reliability.

Improved engine performance

An appropriate amount of fuel is supplied to the engine by a large-capacity electric fuel pump for improved performance. A water separator and cold fuel resistance valve are integrated into the prefilter for added protection against moisture.

Stronger boom

The front attachment's durability has been enhanced by HN bushings to strengthen the brackets on the boom end and foot, and the reinforced resin thrust plates on the boom.

Safer working environment

The covers on the platform walkway have been reinforced and a disconnect switch



Reinforced for safer working environment.





“ It is an excellent machine and the whole package is strong in terms of its versatility ”

Patrik Lindskog, operator, Steffes Schakt

A VERSATILE PLAYER

The flexibility of the ZX350LC-6 makes it a versatile player, ideal for a wide range of construction applications. Capable of providing a smooth, fast and precise operation, as well as high levels of productivity and fuel efficiency, it is among the most popular Hitachi excavator models.

Enhanced visibility

The bar near eye level has been removed from the optional front guard, which helps to improve the operator's visibility. Blind spots on the upper and lower bar joints have also been minimised.

Machine performance

Two extra spools in the control valve of the ZX350LC-6 increases versatility by making it easier to install attachments that require multiple, large volumes of oil and on two-piece boom models.

Increased flexibility

The rotary tilt and tilt modes have been added to the attachment support system on the ZX350LC-6. These and nine other modes

can be registered on the monitor for the easy fitment of attachments to increase versatility.

Easy access

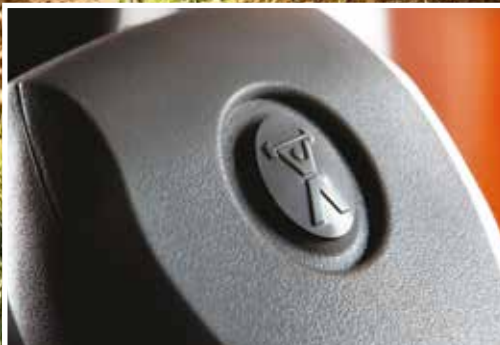
The optional front guard can be opened up to 90 degrees – with a simple one-touch mechanism and the aid of a gas damper. This is a convenient feature for easy routine maintenance.

Greater lifting power

The tried-and-tested power-boost feature has 10% more capacity than the ZX350LC-3. This increases the capability of the ZX350LC-6 to deliver an enhanced level of excavating performance and lifting power.



Two tilt modes add to the versatility of the ZX350LC-6.



Power boost has 10% more capacity.



Minimal blind spots improve visibility.



Durable materials resist weather damage.



Urea is injected into the exhaust gas to reduce emissions.



i There are up to 100 points on the Hitachi Design Centre's checklist to measure the quality of its construction machinery, covering performance, reliability and safety.



THE QUEST FOR QUALITY

The quest for quality is an eternal endeavour at Hitachi's Tsuchiura Works factory in Japan – the largest facility of its kind in the world. The ZX350LC-6 is an example of what can be achieved by the Hitachi design team, which is committed to the continuous development of its machines to deliver further improvements in performance, reliability and safety.



Reduced environmental impact

The variable geometry turbocharger and high volume-cooled exhaust gas recirculation (EGR) system help to reduce levels of nitrogen oxide and other pollutants. This reduces the environmental impact of the ZX350LC-6.

Fewer emissions

A selective catalytic reduction (SCR) system developed by Hitachi injects urea into exhaust gas to reduce nitrogen oxide from emissions. This leading technology helps the ZX350LC-6 to comply with EU Stage IV emission regulations.

Superior console materials

The console in the cab has been sculpted in highly durable AES-grade resin, which re-

sists damage from the sun's ultraviolet rays and offers superior weather resistance.

Comfortable cab

Hitachi caters for the comfort of operators with a fully adjustable seat, ergonomic controls and advanced music system in the spacious cab of the ZX350LC-6.

Exceptional cooling and acoustic performance

High-quality sealant (around the cooling package) and acoustic materials on the upper structure of the ZX350LC-6 eliminate any deterioration caused by heat. These ensure the long-term cooling and low-noise acoustic performance.

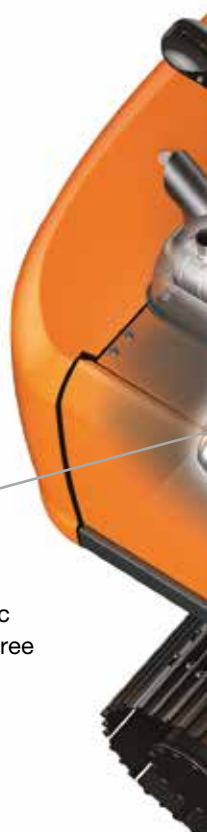


Ergonomic controls contribute to the comfort within the cab.



“ *Low fuel consumption makes Zaxis-6 special – as well as high controllability and productivity* ”

Tsuyoshi Nakamura,
General Manager Engineering,
Hitachi Construction Machinery (Europe) NV



The TRIAS II hydraulic system consists of three pumps and valves.

MASTERS OF TECHNOLOGY

Hitachi excavators are manufactured using cutting-edge technology to ensure they can meet the evolving needs of the construction industry. The ZX350LC-6 medium excavator benefits from the latest developments by Hitachi engineers, and is a typical example of this approach, which results in market-leading construction machinery.

Saving fuel and costs

TRIAS II technology developed by Hitachi reduces the hydraulic oil returned to the tank due to the cooperative control of the pump and valve. This helps to lower fuel consumption by 7% in PWR mode with the same productivity. Estimates suggest a saving of approximately €3,020 per year with the ZX350LC-6 in PWR mode.

Environmentally friendly

The auto shutdown feature minimises the environmental impact of the ZX350LC-6

medium excavator. It helps to prevent fuel wastage, as well as reduce noise levels, exhaust emissions and CO₂ levels.

Remote monitoring

Global e-Service allows owners to monitor their ZX350LC-6 remotely via Owner's Site (24/7 online access) and ConSite (an automatic monthly report). These help to maximise efficiency, minimise downtime and improve overall performance.

Fewer emissions

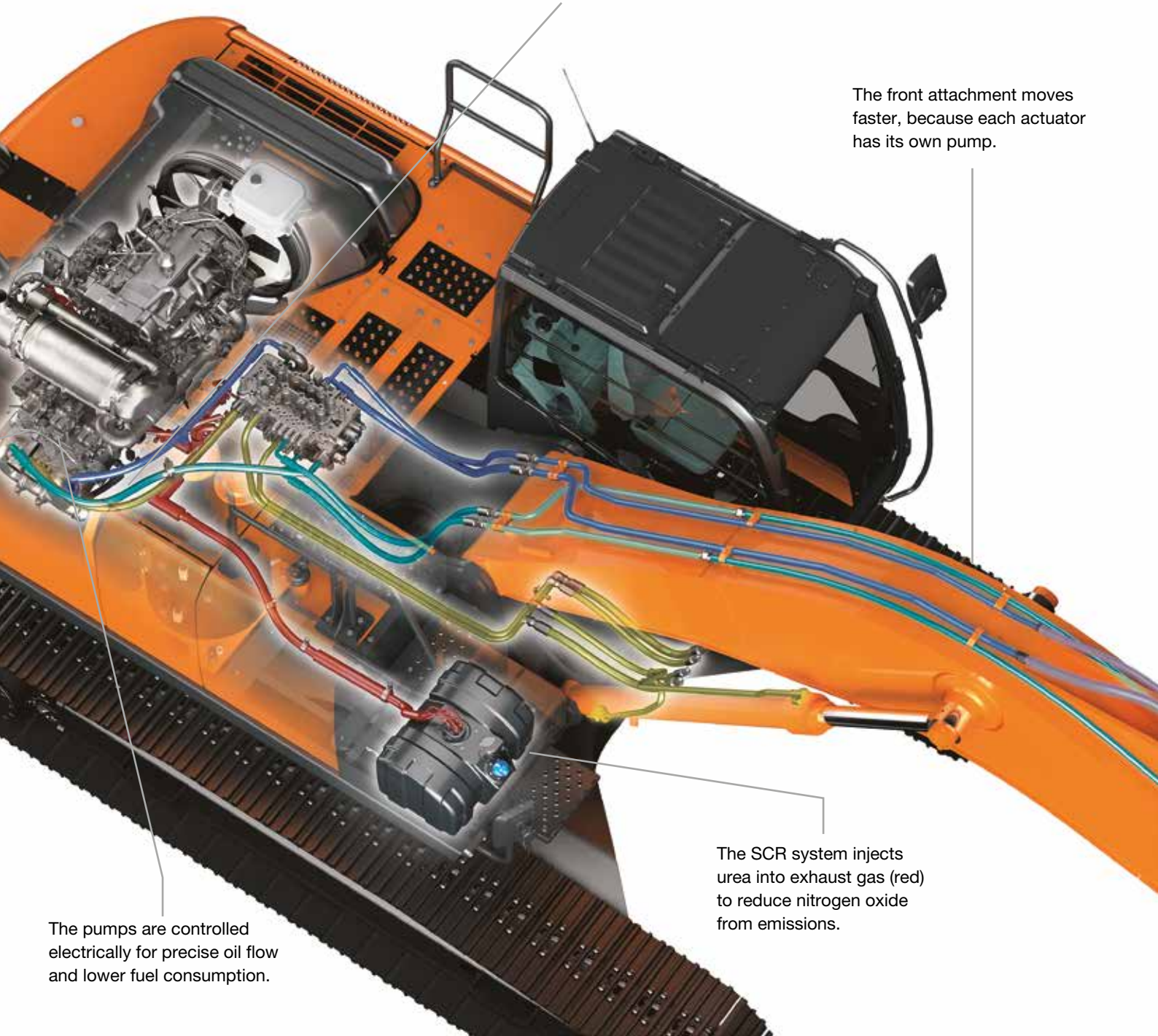
The after-treatment device helps to reduce emissions and noise levels. This advanced technology consists of a diesel oxidation catalyst (DOC), urea mixing pipe, SCR system and silencer.

Superior sound system

Operators can work to the music they prefer, either on the AM/FM radio, which is accessible from the monitor, or via an auxiliary socket for devices such as MP3 players, which is linked to the sound system.

The oil flows separately to the bucket (light blue), arm (dark blue) and boom (yellow) cylinders.

The front attachment moves faster, because each actuator has its own pump.



The pumps are controlled electrically for precise oil flow and lower fuel consumption.

The SCR system injects urea into exhaust gas (red) to reduce nitrogen oxide from emissions.



7% lower fuel consumption in PWR mode with TRIAS II.



Remote monitoring improves efficiency and performance.



The SCR system reduces emissions and noise levels.



“ *The total cost of ownership is favourable and we enjoy a reliable service* ”

Klaus Nieweler, Operations Manager,
MoB GmbH & Co. KG

REDUCING THE TOTAL COST OF OWNERSHIP



SUPPORT CHAIN

Hitachi has created the Support Chain after-sales programme to ensure optimum efficiency, as well as minimal downtime, reduced running costs and high resale values.

Global e-Service

Hitachi has developed two remote monitoring systems as part of its Global e-Service online application. Owner's Site and ConSite are an integral part of the excavator, which sends operational data daily via GPRS or satellite to www.globaleservice.com. This allows immediate access to the Owner's Site, and the vital information that is required for support on job sites.

Comparing the ratio of operating and non-operating hours helps to enhance efficiency. Effective management of maintenance programmes helps to maximise avail-

ability. Running costs can also be managed by analysing the fuel consumption. The location and movements of each machine are clearly displayed for essential planning.

An automatic service report – ConSite – sends a monthly email summarising the information from Global e-Service for each machine. This includes: daily working hours and fuel consumption data; statistics on the operating mode ratio, plus a comparison for fuel consumption/efficiency and CO₂ emissions.

Technical support

Each Hitachi service technician receives full technical training from HCME in Amsterdam. These sessions provide access to the same technical knowledge available within the Hitachi quality assurance departments and design centres. Technicians combine this global expertise with the local language and culture of the customer to provide the highest level of after-sales support.

Extended warranty and service contracts

Every new Hitachi Zaxis-6 model is covered by a full manufacturer's warranty. For extra



Global e-Service



Technical support



Hitachi Parts

protection – due to severe working conditions or to minimise equipment repair costs – Hitachi dealers offer a unique extended warranty called HELP (Hitachi Extended Life Program) and comprehensive service contracts. These can help to optimise the performance of each machine, reduce downtime and ensure higher resale values.

Parts

Hitachi offers a wide range and a high availability of parts dispatched from the 53,000 m² HCME European Parts Depot in The Netherlands.

- Hitachi Genuine Parts: allow machines to work for longer, with lower running and maintenance costs.
- Hitachi Select Parts and 2Genuine Parts: especially for older machines, they cost less, are of proven quality and come with the manufacturer's warranty.
- Performance Parts: to cope with highly demanding conditions, they have been engineered for greater durability, better performance or longer life.

- Remanufactured components: offering an economically viable solution, they are the best option when preventative replacements are required.

Whatever the choice, the renowned quality of Hitachi construction machinery is assured.



EH dump trucks



EX ultra-large excavators



ZW wheel loaders



“ We develop construction machinery that contributes to the creation of affluent and comfortable societies ”

Yuichi Tsujimoto, HCM President

BUILDING A BETTER FUTURE

Established in 1910, Hitachi, Ltd. was built upon a founding philosophy of making a positive contribution to society through technology. This is still the inspiration behind the Hitachi group's reliable solutions that answer today's challenges and help to create a better world.

Hitachi, Ltd. is now one of the world's largest corporations, with a vast range of innovative products and services. These have been created to challenge convention, improve social infrastructure and contribute to a sustainable society.

Hitachi Construction Machinery Co., Ltd. (HCM) was founded in 1970 as a subsidiary of Hitachi, Ltd. and has become one of the world's largest construction equipment suppliers. A pioneer in producing hydraulic excavators, HCM also manufactures wheel loaders, rigid dump trucks, crawler cranes and special application machines at state-of-the-art facilities across the globe.

Incorporating advanced technology, Hitachi construction machinery has a reputation for the highest quality standards. Suitable for a wide range of industries, it is always hard at

work around the world – helping to create infrastructure for a safe and comfortable way of living, developing natural resources and supporting disaster relief efforts.

Hitachi Zaxis excavators are renowned for being reliable, durable and versatile – capable of delivering the highest levels of productivity under the most challenging of conditions. They are designed to provide owners with a reduced total cost of ownership, and operators with the ultimate level of comfort and safety.



Mini excavators

SPECIFICATIONS

ENGINE

Model	Isuzu AQ-6HK1X
Type	4-cycle water-cooled, common rail direct injection
Aspiration	Variable geometry turbocharged, intercooled, cooled EGR
Aftertreatment	DOC and SCR system
No. of cylinders	6
Rated power	
ISO 14396	210 kW at 1 900 min ⁻¹
ISO 9249, net	202 kW at 1 900 min ⁻¹
SAE J1349, net	202 kW at 1 900 min ⁻¹
Maximum torque	1 080 Nm at 1 500 min ⁻¹
Piston displacement	7.790 L
Bore and stroke	115 mm x 125 mm
Batteries	2 x 12 V / 135 Ah

HYDRAULIC SYSTEM

Hydraulic Pumps

Main pumps	3 variable displacement axial piston pumps
Maximum oil flow	2 x 288 L/min
.....	1 x 260 L/min
Pilot pump	1 gear pump
Maximum oil flow	36.4 L/min

Hydraulic Motors

Travel	2 variable displacement axial piston motors
Swing	1 axial piston motor

Relief Valve Settings

Implement circuit	34.3 MPa
Swing circuit	32.4 MPa
Travel circuit	34.3 MPa
Pilot circuit	3.9 MPa
Power boost	38.0 MPa

Hydraulic Cylinders

	Quantity	Bore	Rod diameter
Boom	2	145 mm	100 mm
Arm	1	170 mm	115 mm
Bucket	1	140 mm	95 mm
Positioning ^{*1}	1	170 mm	110 mm

*1 : For 2-piece boom

UPPERSTRUCTURE

Revolving Frame

D-section frame for resistance to deformation.

Swing Device

Axial piston motor with planetary reduction gear is bathed in oil. Swing circle is single-row. Swing parking brake is spring-set/hydraulic-released disc type.

Swing speed	9.7 min ⁻¹
Swing torque	120 kNm

Operator's Cab

Independent spacious cab, 1 005 mm wide by 1 675 mm high, conforming to ISO* Standards.

* International Standardisation Organisation

UNDERCARRIAGE

Tracks

Heat-treated connecting pins with dirt seals. Hydraulic (grease) track adjusters with shock-absorbing recoil springs.

Numbers of Rollers and Shoes on Each Side

Upper rollers	2
Lower rollers	8
Track shoes	48
Track guards	3

Travel Device

Each track driven by 2-speed axial piston motor. Parking brake is spring-set/hydraulic-released disc type. Automatic transmission system: High-Low.

Travel speeds	High : 0 to 5.0 km/h
.....	Low : 0 to 3.2 km/h

Maximum traction force ... 298 kN

Gradeability

70% (35 degree) continuous

SOUND LEVEL

Sound level in cab according to ISO 6396 LpA 69 dB(A)

External sound level according to ISO 6395 and

EU Directive 2000/14/EC LwA 105 dB(A)

SERVICE REFILL CAPACITIES

Fuel tank	630.0 L
Engine coolant	43.0 L
Engine oil	48.0 L
Swing device	17.0 L
Travel device (each side)	9.2 L
Hydraulic system	340.0 L
Hydraulic oil tank	180.0 L
DEF/AdBlue® tank	70.0 L

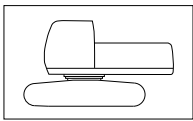
WEIGHTS AND GROUND PRESSURE

Operating Weight and Ground Pressure

			ZAXIS 350LC				ZAXIS 350LCN			
Boom type			Monoblock		2-Piece		Monoblock		2-Piece	
Shoe type	Shoe width	Arm length	kg	kPa	kg	kPa	kg	kPa	kg	kPa
Triple grouser	600 mm	2.33 m	35 000	66	35 900	68	34 900	66	35 800	67
		2.67 m	35 100	66	36 000	68	35 000	66	35 900	68
		3.20 m	35 200	66	36 100	68	35 100	66	36 000	68
	700 mm	2.33 m	35 400	57	36 300	58	35 300	57	36 200	58
		2.67 m	35 500	57	36 400	59	35 400	57	36 300	58
		3.20 m	35 500	57	36 500	59	35 400	57	36 400	59
	800 mm	2.33 m	35 800	50	36 700	52				
		2.67 m	35 900	50	36 800	52				
		3.20 m	35 900	50	36 900	52				
	900 mm	2.33 m	36 200	45	37 100	46				
		2.67 m	36 200	45	37 200	46				
		3.20 m	36 300	45	37 300	46				

Including 1.40 m³ (ISO heaped) bucket weight (1 170 kg) and counterweight (7 600 kg).

Basic Machine Weight and Overall Width



Excluding front end attachment, fuel, hydraulic oil and coolant etc. Including counterweight.

ZAXIS 350LC

Shoe width	Weight	Overall width
600 mm	27 100 kg	3 190 mm
700 mm	27 500 kg	3 290 mm
800 mm	27 900 kg	3 390 mm
900 mm	28 300 kg	3 490 mm

ZAXIS 350LCN

Shoe width	Weight	Overall width
600 mm	27 000 kg	2 990 mm
700 mm	27 400 kg	3 090 mm

Components Weight

	Weight
Counterweight	7 600 kg
Monoblock boom (with arm cylinder and boom cylinder)	4 000 kg
2-Piece boom (with arm cylinder and boom cylinder)	4 940 kg
Arm 2.33 m (with bucket cylinder)	1 440 kg
Arm 2.67 m (with bucket cylinder)	1 530 kg
Arm 3.20 m (with bucket cylinder)	1 610 kg
Bucket 1.40 m ³	1 170 kg

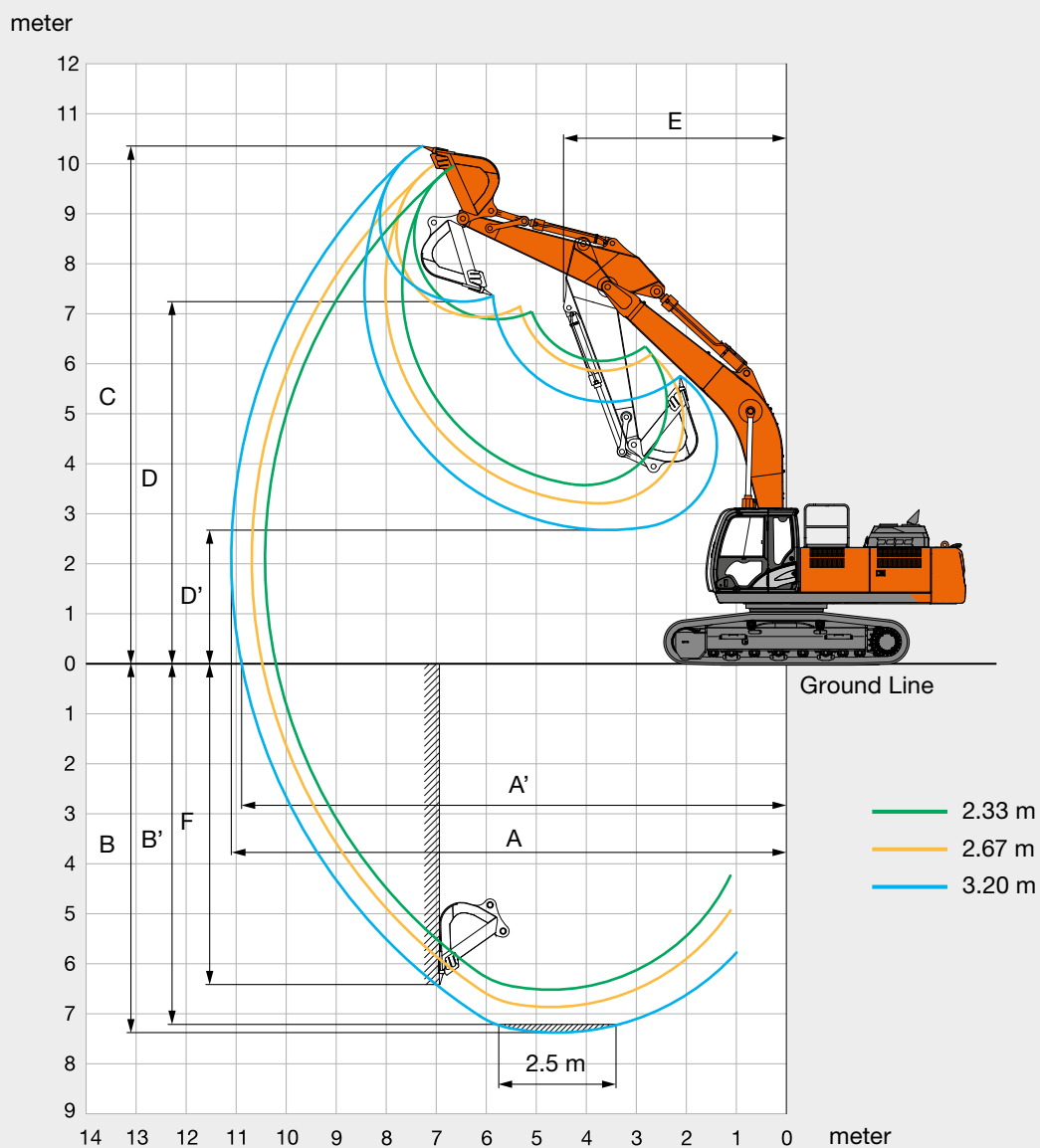
BUCKET AND ARM DIGGING FORCE

Arm length	ZAXIS 350LC / ZAXIS 350LCN		
	2.33 m	2.67 m	3.20 m
Bucket digging force* ISO	246 kN		
Bucket digging force* SAE : PCSA	214 kN		
Arm crowd force* ISO	250 kN	222 kN	185 kN
Arm crowd force* SAE : PCSA	239 kN	213 kN	177 kN

* At power boost

SPECIFICATIONS

WORKING RANGES: MONOBLOCK BOOM

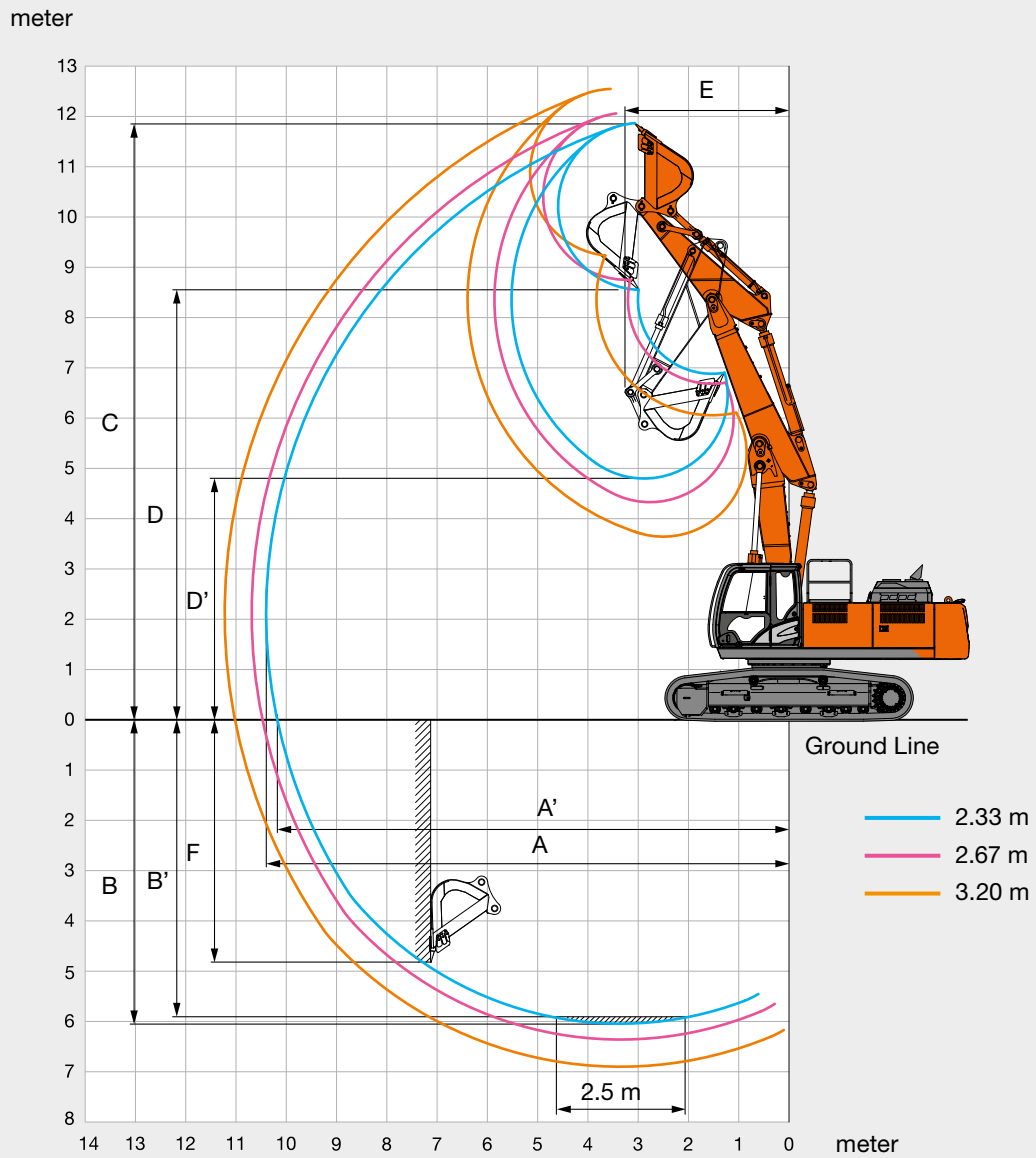


Unit: mm

	ZAXIS 350LC / ZAXIS 350LCN		
	Monoblock boom		
Arm length	2.33 m	2.67 m	3.20 m
A Max. digging reach	10 310	10 570	11 100
A' Max. digging reach (on ground)	10 080	10 360	10 890
B Max. digging depth	6 500	6 840	7 380
B' Max. digging depth for 2.5 m level	6 300	6 640	7 210
C Max. cutting height	9 980	9 990	10 360
D Max. dumping height	6 900	6 940	7 240
D' Min. dumping height	3 580	3 210	2 680
E Min. swing radius	4 460	4 610	4 460
F Max. vertical wall digging depth	5 330	5 510	6 420

Excluding track shoe lug

WORKING RANGES: 2-PIECE BOOM



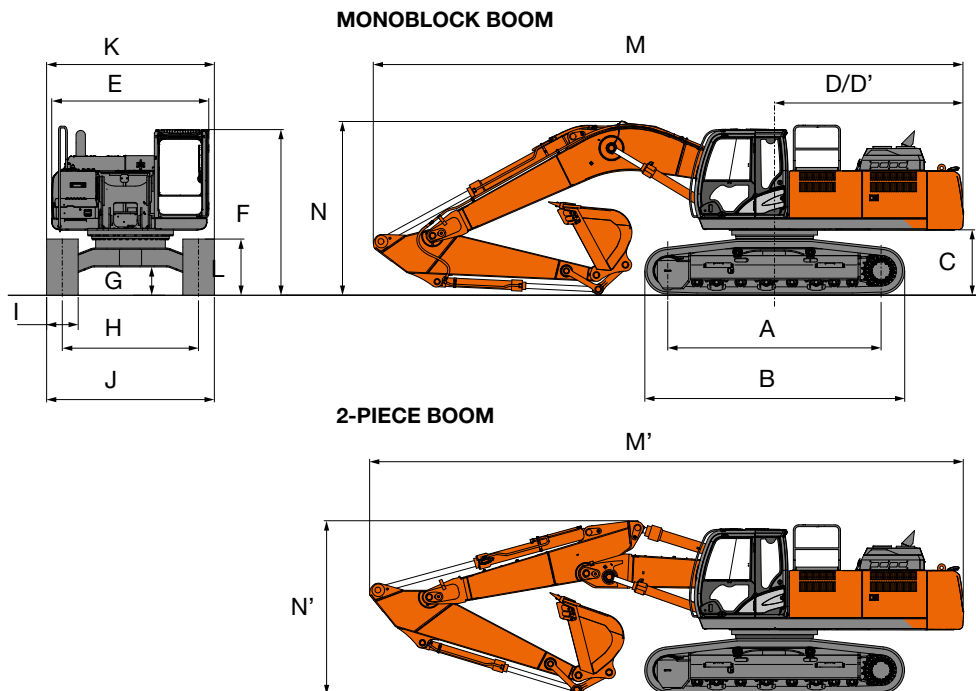
Unit: mm

	ZAXIS 350LC / ZAXIS 350LCN		
	2-Piece boom		
Arm length	2.33 m	2.67 m	3.20 m
A Max. digging reach	10 390	10 680	11 220
A' Max. digging reach (on ground)	10 170	10 470	11 020
B Max. digging depth	6 040	6 360	6 900
B' Max. digging depth for 2.5 m level	5 930	6 250	6 800
C Max. cutting height	11 870	12 060	12 550
D Max. dumping height	8 550	8 750	9 240
D' Min. dumping height	4 810	4 330	3 650
E Min. swing radius	3 250	3 120	2 890
F Max. vertical wall digging depth	4 820	5 090	5 780

Excluding track shoe lug

SPECIFICATIONS

DIMENSIONS



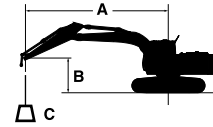
Unit: mm

	ZAXIS 350LC	ZAXIS 350LCN
A Distance between tumbler	4 050	4 050
B Undercarriage length	4 950	4 950
* C Counterweight clearance	1 160	1 160
D Rear-end swing radius	3 600	3 600
D' Rear-end length	3 590	3 590
E Overall width of upperstructure	2 990	2 990
F Overall height of cab	3 150	3 150
* G Min. ground clearance	500	500
H Track gauge	2 590	2 390
I Track shoe width	G 600	G 600
J Undercarriage width	3 190	2 990
K Overall width	3 190	2 990
* L Track height with triple grouser shoes	1 070	1 070
MONOBLOCK BOOM		
M Overall length		
With Arm 2.33 m	11 390	11 390
With Arm 2.67 m	11 350	11 350
With Arm 3.20 m	11 220	11 220
N Overall height of boom		
With Arm 2.33 m	3 510	3 510
With Arm 2.67 m	3 470	3 470
With Arm 3.20 m	3 270	3 270
2-PIECE BOOM		
M' Overall length		
With Arm 2.33 m	11 370	11 370
With Arm 2.67 m	11 330	11 330
With Arm 3.20 m	11 290	11 290
N' Overall height of boom		
With Arm 2.33 m	3 380	3 380
With Arm 2.67 m	3 370	3 370
With Arm 3.20 m	3 310	3 310

* Excluding track shoe lug G: Triple grouser shoe

LIFTING CAPACITIES

- Notes: 1. Ratings are based on ISO 10567.
 2. Lifting capacity does not exceed 75% of tipping load with the machine on firm, level ground or 87% full hydraulic capacity.
 3. The load point is the center-line of the bucket pivot mounting pin on the arm.
 4. *Indicates load limited by hydraulic capacity.
 5. 0 m = Ground.



A: Load radius
 B: Load point height
 C: Lifting capacity

For lifting capacities, subtract bucket and quick hitch weight from lifting capacities.

ZAXIS 350LC MONOBLOCK BOOM

Rating over-front Rating over-side or 360 degrees Unit : kg

Conditions	Load point height m	Load radius												At max. reach			
		1.5 m		3.0 m		4.5 m		6.0 m		7.5 m		9.0 m		meter			
Boom 6.40 m	6.0																
Arm 2.33 m	4.5																
Counterweight	3.0																
7 600 kg	1.5																
Shoe 600 mm	0 (Ground)																
	-1.5																
	-3.0																
	-4.5																
Boom 6.40 m	6.0																
Arm 2.67 m	4.5																
Counterweight	3.0																
7 600 kg	1.5																
Shoe 600 mm	0 (Ground)																
	-1.5																
	-3.0																
	-4.5																
Boom 6.40 m	6.0																
Arm 3.20 m	4.5																
Counterweight	3.0																
7 600 kg	1.5																
Shoe 600 mm	0 (Ground)																
	-1.5																
	-3.0																
	-4.5																

ZAXIS 350LCN MONOBLOCK BOOM

Rating over-front Rating over-side or 360 degrees Unit : kg

Conditions	Load point height m	Load radius												At max. reach			
		1.5 m		3.0 m		4.5 m		6.0 m		7.5 m		9.0 m		meter			
Boom 6.40 m	6.0																
Arm 2.33 m	4.5																
Counterweight	3.0																
7 600 kg	1.5																
Shoe 600 mm	0 (Ground)																
	-1.5																
	-3.0																
	-4.5																
Boom 6.40 m	6.0																
Arm 2.67 m	4.5																
Counterweight	3.0																
7 600 kg	1.5																
Shoe 600 mm	0 (Ground)																
	-1.5																
	-3.0																
	-4.5																
Boom 6.40 m	6.0																
Arm 3.20 m	4.5																
Counterweight	3.0																
7 600 kg	1.5																
Shoe 600 mm	0 (Ground)																
	-1.5																
	-3.0																
	-4.5																

LIFTING CAPACITIES

ZAXIS 350LC 2-PIECE BOOM

Rating over-front Rating over-side or 360 degrees Unit : kg

Conditions	Load point height m	Load radius												At max. reach		
		1.5 m		3.0 m		4.5 m		6.0 m		7.5 m		9.0 m		meter		
2-Piece Boom Arm 2.33 m Counterweight 7 600 kg Shoe 600 mm	9.0					*12 440	*12 440							*11 220	*11 220	5.26
	7.5					*12 110	*12 110	*10 040	*10 040					*8 810	8 670	6.83
	6.0					*13 500	*13 500	*10 350	*10 350	*8 740	7 500			*7 780	6 920	7.80
	4.5			*19 250	*19 250	*17 710	15 970	*11 510	*10 520	*8 970	7 490			*7 310	6 060	8.40
	3.0			*25 800	*25 800	*19 540	15 520	*13 440	10 630	*9 610	7 320			*7 160	5 650	8.69
	1.5			*24 390	*24 390	*20 580	15 310	15 130	10 100	*10 430	7 080			*7 280	5 540	8.72
	0 (Ground)			*31 740	28 030	*20 680	14 550	15 170	9 670	10 790	6 840			*7 700	5 720	8.47
	-1.5	*29 000	*29 000	*31 740	27 830	*20 900	14 220	15 140	9 310	*10 250	6 740			*7 690	6 270	7.94
-3.0	*38 040	*38 040	*28 670	28 130	*18 740	14 150	*11 940	9 230					*7 000	*7 000	6.91	
2-Piece Boom Arm 2.67 m Counterweight 7 600 kg Shoe 600 mm	9.0					*11 660	*11 660							*9 950	*9 950	5.73
	7.5					*11 520	*11 520	*9 550	*9 550					*8 050	8 030	7.19
	6.0			*14 870	*14 870	*12 730	*12 730	*9 920	*9 920	*8 310	7 640			*7 190	6 520	8.12
	4.5			*22 640	*22 640	*16 300	15 930	*11 010	10 510	*8 630	7 600			*6 790	5 750	8.70
	3.0			*25 650	*25 650	*19 960	15 550	*12 850	10 730	*9 290	7 400			*6 670	5 370	8.98
	1.5			*28 870	*28 870	*20 490	15 470	*15 060	10 160	*10 120	7 130	*6 790	5 260	*6 780	5 260	9.00
	0 (Ground)	*18 550	*18 550	*31 650	28 120	*20 540	14 610	*15 070	9 690	10 710	6 860			*7 170	5 410	8.77
	-1.5	*25 980	*25 980	*32 010	27 730	*20 820	14 180	15 110	9 320	10 610	6 680			*7 710	5 880	8.25
-3.0	*33 730	*33 730	*29 730	27 900	*19 580	14 080	*13 090	9 140					*6 450	*6 450	7.36	
-4.5			*20 150	*20 150	*12 000	*12 000							*10 590	*10 590	4.80	
2-Piece Boom Arm 3.20 m Counterweight 7 600 kg Shoe 600 mm	10.5													*9 340	*9 340	4.38
	9.0							*9 100	*9 100					*7 280	*7 280	6.55
	7.5							*8 920	*8 920	*7 690	*7 690			*6 530	*6 530	7.86
	6.0					*11 690	*11 690	*9 300	*9 300	*7 790	*7 750			*6 210	5 860	8.72
	4.5			*24 810	*24 810	*14 450	*14 450	*10 310	*10 310	*8 170	*7 640	*6 810	5 540	*6 050	5 240	9.25
	3.0	*19 630	*19 630	*25 490	*25 490	*19 800	15 660	*12 010	10 290	*8 840	7 470	*7 230	5 460	*5 950	4 920	9.52
	1.5			*27 720	*27 720	*20 490	15 830	*14 250	10 330	*9 680	7 270	*7 590	5 320	*6 040	4 820	9.54
	0 (Ground)	*16 080	*16 080	*30 720	28 560	*20 440	14 820	*14 980	9 790	*10 560	6 970	*7 820	5 190	*6 350	4 930	9.32
-1.5	*21 670	*21 670	*32 160	27 820	*20 630	14 250	*15 170	9 430	10 650	6 710			*6 940	5 310	8.84	
-3.0	*26 980	*26 980	*31 000	27 740	*20 440	14 070	*14 390	9 140	*9 220	6 650			*6 120	6 100	8.05	
-4.5	*29 880	*29 880	*25 220	*25 220	*15 740	14 060	*9 030	*9 030					*7 750	*7 750	6.26	

ZAXIS 350LCN 2-PIECE BOOM

Rating over-front Rating over-side or 360 degrees Unit : kg

Conditions	Load point height m	Load radius												At max. reach		
		1.5 m		3.0 m		4.5 m		6.0 m		7.5 m		9.0 m		meter		
2-Piece Boom Arm 2.33 m Counterweight 7 600 kg Shoe 600 mm	9.0					*12 440	*12 440							*11 220	*11 220	5.26
	7.5					*12 110	*12 110	*10 040	*10 040					*8 810	8 030	6.83
	6.0					*13 500	*13 500	*10 350	10 060	*8 740	6 950			*7 780	6 410	7.80
	4.5			*19 250	*19 250	*17 710	14 840	*11 510	9 850	*8 970	6 940			*7 310	5 600	8.40
	3.0			*25 800	*25 800	*19 540	*14 410	*13 440	9 840	*9 610	6 770			*7 160	5 210	8.69
	1.5			*24 390	*24 390	*20 580	14 000	15 110	9 320	*10 430	6 530			*7 280	5 100	8.72
	0 (Ground)			*31 740	24 830	*20 680	13 260	15 140	8 900	10 770	6 300			*7 700	5 270	8.47
	-1.5	*29 000	*29 000	*31 740	24 640	*20 900	12 940	15 110	8 550	*10 250	6 200			*7 690	5 780	7.94
-3.0	*38 040	*38 040	*28 670	24 920	*18 740	12 880	*11 940	8 470					*7 000	*7 000	6.91	
2-Piece Boom Arm 2.67 m Counterweight 7 600 kg Shoe 600 mm	9.0					*11 660	*11 660							*9 950	*9 950	5.73
	7.5					*11 520	*11 520	*9 550	*9 550					*8 050	7 440	7.19
	6.0			*14 870	*14 870	*12 730	*12 730	*9 920	*9 920	*8 310	7 080			*7 190	6 040	8.12
	4.5			*22 640	*22 640	*16 300	14 860	*11 010	9 860	*8 630	7 040			*6 790	5 310	8.70
	3.0			*25 650	*25 650	*19 960	14 390	*12 850	9 940	*9 290	6 850			*6 670	4 950	8.98
	1.5			*28 870	26 130	*20 490	14 150	15 050	9 380	*10 120	6 580	*6 790	4 840	*6 780	4 840	9.00
	0 (Ground)	*18 550	*18 550	*31 650	24 900	*20 540	13 320	*15 060	8 910	10 690	6 320			*7 170	4 980	8.77
	-1.5	*25 980	*25 980	*32 010	24 540	*20 820	12 910	15 080	8 550	10 590	6 150			*7 710	5 410	8.25
-3.0	*33 730	*33 730	*29 730	24 690	*19 580	12 810	*13 090	8 380					*6 450	6 400	7.36	
-4.5			*20 150	*20 150	*12 000	*12 000							*10 590	*10 590	4.80	
2-Piece Boom Arm 3.20 m Counterweight 7 600 kg Shoe 600 mm	10.5													*9 340	*9 340	4.38
	9.0							*9 100	*9 100					*7 280	*7 280	6.55
	7.5							*8 920	*8 920	*7 690	7 160			*6 530	6 510	7.86
	6.0					*11 690	*11 690	*9 300	*9 300	*7 790	7 290			*6 210	5 420	8.72
	4.5			*24 810	*24 810	*14 450	*14 450	*10 310	9 880	*8 170	7 160	*6 810	5 120	*6 050	4 830	9.25
	3.0	*19 630	*19 630	*25 490	*25 490	*19 800	14 500	*12 010	10 140	*8 840	6 970	*7 230	5 040	*5 950	4 530	9.52
	1.5			*27 720	26 790	*20 490	14 500	*14 250	9 540	*9 680	6 740	*7 590	4 900	*6 040	4 430	9.54
	0 (Ground)	*16 080	*16 080	*30 720	25 310	*20 440	13 520	*14 970	9 010	*10 560	6 420	*7 820	4 780	*6 350	4 540	9.32
-1.5	*21 670	*21 670	*32 160	24 620	*20 630	12 970	*15 170	8 660	10 630	6 170			*6 940	4 880	8.84	
-3.0	*26 980	*26 980	*31 000	24 540	*20 440	12 800	*14 390	8 380	*9 220	6 110			*6 120	5 610	8.05	
-4.5	*29 880	*29 880	*25 220	24 970	*15 740	12 780	*9 030	8 450					*7 750	*7 750	6.26	

EQUIPMENT

● : Standard equipment

○ : Optional equipment

ENGINE

Aftertreatment device	●
Air cleaner double filters	●
Alternator 50 A	●
Auto idle system	●
Auto shut-down control	●
Cartridge-type engine oil filter	●
Cartridge-type fuel main filter	●
Cold fuel resistance valve	●
DEF/AdBlue® tank inlet strainer and extension filter	●
DEF/AdBlue® tank with ISO magnet adapter	●
Dry-type air filter with evacuator valve (with air filter restriction indicator)	●
Dust-proof indoor net	●
ECO/PWR mode control	●
Electrical fuel feed pump	●
Engine oil drain coupler	●
Expansion tank	●
Fan guard	●
Fuel cooler	●
Fuel pre-filter with water separator	●
Isolation-mounted engine	●
Maintenance free pre-cleaner	○
Radiator, oil cooler and intercooler	●

HYDRAULIC SYSTEM

Auto power lift	●
Control valve with main relief valve	●
Full-flow filter	●
High mesh full flow filter with restriction indicator	○
Hose rupture valve for arm	●
Hose rupture valve for boom	●
Pilot filter	●
Power boost	●
Suction filter	●
Swing dampener valve	●
Two extra port for control valve	●
Variable hydraulic fan for oil cooler	●
Variable reliefvalve for breaker & crusher	●
Work mode selector	●

CAB

All-weather sound suppressed steel cab	●
AM-FM radio	●
Ashtray	●
Auto control air conditioner	●
AUX function lever (Breaker assist)	○
AUX terminal and storage	●
Cigarette lighter 24 V	●
CRES V (Center pillar reinforced structure) cab	●
Drink holder with hot & cool function	●
Electric double horn	●
Engine shut-off switch	●
Equipped with reinforced, tinted (green color) glass windows	●
Evacuation hammer	●
Fire extinguisher bracket	○
Floor mat	●
Footrest	●
Front window washer	●
Glove compartment	●
Hot & cool box	●
Intermittent windshield wipers	●
Key cylinder light	●
Laminated round glass window	○
LED room light with door courtesy	●
OPG front guard Level II (ISO10262) compliant cab	○
OPG top guard Level I (ISO10262) compliant cab	●
OPG top guard Level II (ISO10262) compliant cab	○
Pilot control shut-off lever	●
Power outlet 12 V	○
Rain guard	○
Rear tray	●
Retractable seat belt	●
ROPS (ISO12117-2) compliant cab	●
Rubber radio antenna	●
Seat : air suspension seat with heater	●
Seat adjustment part : backrest, armrest, height and angle, slide forward / back	●
Short wrist control levers	●
Sun visor (front window/side window)	○
Transparent roof with slide curtain	●
Windows on front, upper, lower and left side can be opened	●
2 speakers	●
4 fluid-filled elastic mounts	●

MONITOR SYSTEM

Alarms: overheat, engine warning, engine oil pressure, alternator, minimum fuel level, hydraulic filter restriction, air filter restriction, work mode, overload, SCR system trouble, etc	●
Alarm buzzers: overheat, engine oil pressure, overload, SCR system trouble	●
Display of meters: water temperature, hour, fuel rate, clock, DEF/AdBlue® rate	●
Other displays: work mode, auto-idle, glow, rearview monitor, operating conditions, etc	●
32 languages selection	●

LIGHTS

Additional boom light with cover	○
Additional cab roof front lights	○
Additional cab roof rear lights	○
Rotating lamp	○
2 working lights	●

UPPER STRUCTURE

Batteries 2 x 135 Ah	●
Battery disconnect switch	●
Body top handrail	●
Counterweight 7 600 kg	●
Electric fuel refilling pump with auto stop and filter	●
Fuel level float	●
Hydraulic oil level gauge	●
Lockable fuel refilling cap	●
Lockable machine covers	●
Lockable tool box	●
Platform handrail	●
Rear view camera	●
Rear view mirror (right & left side)	●
Skid-resistant plates and handrails	●
Swing parking brake	●
Undercover	●
Utility space	●

UNDERCARRIAGE

Bolt-on sprocket	●
Reinforced track links with pin seals	●
Shoe: 600 mm triple grouser	●
Track undercover	○
Travel direction mark on track frame	●
Travel motor covers	●
Travel parking brake	●
Upper and lower rollers	●
3 track guards (each side) and hydraulic track adjuster	●
4 tie down hooks	●

FRONT ATTACHMENTS

Casted bucket link A	●
Centralized lubrication system	●
Dirt seal on all bucket pins	●
Flanged pin	●
HN bushing	●
Reinforced resin thrust plate	●
WC (tungsten-carbide) thermal spraying	●
Welded bucket link A	○

ATTACHMENTS

Accessories for 2 speed selector	○
Additional pump (30 L/min)	○
Assist piping	○
Attachment basic piping	●
Breaker and crusher piping	●
Parts for breaker and crusher	●
Pilot accumulator	○

MISCELLANEOUS

Global e-Service	●
Onboard information controller	●
Standard tool kit	●
Theft prevention system*	○

Standard and optional equipment may vary by country, so please consult your Hitachi dealer for details.

* Hitachi Construction Machinery cannot be held liable for theft, any system will just minimize the risk of theft.

Prior to operating this machine, including satellite communication system, in a country other than a country of its intended use, it may be necessary to make modifications to it so that it complies with the local regulatory standards (including safety standards) and legal requirements of that particular country. Please do not export or operate this machine outside the country of its intended use until such compliance has been confirmed. Please contact your Hitachi dealer in case of questions about compliance.

These specifications are subject to change without notice. Illustrations and photos show the standard models, and may or may not include optional equipment, accessories, and all standard equipment with some differences in color and features. Before use, read and understand the Operator's Manual for proper operation.

